

**EXCEPTIONAL SAVINGS
UP TO 50% OFF**

ALWAYS INCLUDES

ALL SPECIALITY DINING, SHIPBOARD
GRATUITIES & UNLIMITED WIFI

PLUS CHOICE OF COMPLIMENTARY
WINE & BEER OR SHORE EXCURSION
CREDIT



Viking & Nordic Legends

REYKJAVIK - REYKJAVIK
Oceania Marina

11 Days | 13 Aug -23 Aug 2026

Code : **MNA260813**



DAY	PORT	ARRIVE	DEPART
Aug 13 Thu	Reykjavik, Iceland	Embark 1 PM	7 PM
Aug 14 Fri	Grundarfjordur, Iceland ⚓	7 AM	3 PM
Aug 15 Sat	Akureyri, Iceland	9 AM	6 PM
Aug 16 Sun	Isafjordur, Iceland ⚓	7 AM	3 PM
Aug 17 Mon	At Sea		
Aug 18 Tue	Nanortalik, Greenland ⚓	11 AM	8 PM
Aug 19 Wed	Qaqortoq, Greenland ⚓	7 AM	8 PM
Aug 20 Thu	Narsaq, Greenland ⚓	7 AM	8 PM
Aug 21 Fri	Cruising Prince Christian Sound		
Aug 22 Sat	At Sea		
Aug 23 Sun	Reykjavik, Iceland	Disembark 8 AM	

**Your World Included™
Always Free**

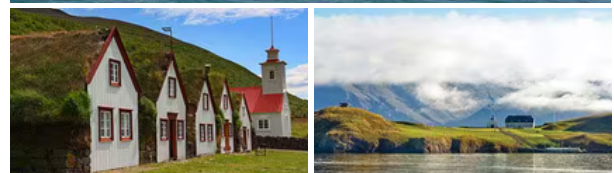
- Gourmet Speciality Restaurants
- Unlimited Starlink® WiFi
- Shipboard Gratuities
- In-Suite and In-Stateroom Dining
- Sodas, Speciality Coffees & Teas
- Still and sparkling Vero Water®
- Juices, Smoothies & Gourmet Ice Cream
- Group Fitness Classes
- Laundry Services

PLUS Choice of:

- Complimentary House Beverage Package (wine & beer)
- Shore Excursion Credit



Oceania Marina





THE ULTIMATE SMALL SHIP EXPERIENCE FOR TRAVEL ADVENTURES

Oceania Marina

1,250 GUESTS | 800 CREW | 62 SUITES | 15 DECKS | 785 LENGTH | 106M WIDTH | 66,084 TONNAGE



INSIDE STATEROOM CATEGORY FIG
174 SQ FT

- Tranquility Bed, an Oceania Cruises exclusive+
- Starlink® WiFi service
- FREE room service menu 24 hours a day
- Gourmet turndown chocolates upon request
- Interactive television system with on-demand movies, weather and more
- Daily housekeeping service
- Plush cotton towels, robes and slippers
- Security safer



DELUXE OCEANVIEW CATEGORY C
240 SQ FT including balcony

- Tranquility Bed, an Oceania Cruises exclusive+
- Daily housekeeping service
- Interactive television system with on-demand movies, weather and more
- Starlink® WiFi service
- FREE room service menu 24 hours a day
- FREE still and sparkling Vero Water®
- Handheld hair dryer
- Writing desk and stationery
- Security safe



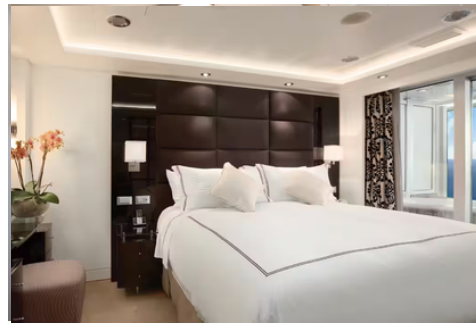
CONCIERGELEVEL VERANDA CATEGORY A1|A2|A3|A4
291 SQ FT including balcony

- Expanded lunch and dinner room service menu from The Grand Dining Room
- FREE laundry service - up to 3 bags per stateroom+
- Private teak veranda++
- Unlimited access to the [Aquamar® Spa Terrace](#)
- Complimentary pressing of garments upon embarkation++
- Complimentary shoeshine service



PENTHOUSE SUITE CATEGORY PH1|PH2|PH3
440 SQ FT including balcony

- Priority luggage delivery
- 24-hour Butler service
- Coordination of shoreside dinner and entertainment reservations
- FREE room service menu 24 hours a day
- Packing and unpacking upon request
- Complimentary garment pressing+
- Course-by-course in-suite dining+
- Order in from any of our specialty restaurants+
- Gourmet evening canapés upon request
- Special services upon request



OCEANIA SUITE CATEGORY OC
1,000 SQ FT including balcony

- Priority luggage delivery
- 24-hour Butler service
- Fresh fruit basket upon request
- Course-by-course in-suite dining+
- Coordination of shoreside dinner and entertainment reservations
- Packing and unpacking upon request
- Complimentary garment pressing+
- Complimentary shoeshine service
- Gourmet evening canapés upon request
- Special services upon request



VISTA SUITE CATEGORY VS
1,200-1,500 SQ FT including balcony

- Priority luggage delivery
- 24-hour Butler service
- Course-by-course in-suite dining*
- Order in from any of our specialty restaurants*
- Coordination of shoreside dinner and entertainment reservations
- Last-minute luggage collection
- Complimentary garment pressing*
- Gourmet evening canapés upon request
- Special services upon request