

2027

 LE COMMANDANT CHARCOT

EMPEROR PENGUIN

One of the rarest wildlife encounter on earth





Price varies subject to exchange rates

Heading beyond Antarctica Circle, into the almost inaccessible Weddell Sea, in search of majestic emperor penguins- "*Largest Penguins in the world*", amidst immaculate and dreamlike landscapes.



SEDUNIA
travel

For more information :-

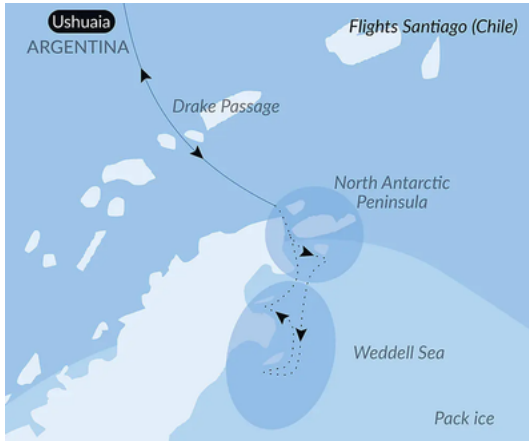
 +603 21420 222(KL) |  +603-2279 5479(KL) +604-2288 088(PG) or email to contact@seduniatravel.com

Sedunia Travel Services Sdn. Bhd. (30240-V) (KKKP No.0019)

KL (HQ) : Level 1B, 12, 13 Menara Genesis, 33 Jalan Sultan Ismail, 50250 Kuala Lumpur

PENANG (Branch) : Unit 1-3, 1st Floor, Menara Penang Garden, 42A Jalan Sultan Ahmad Shah, 10050, Penang

14D/13N Emperor Penguins of Weddell Sea



An all-new exploration into the almost inaccessible Weddell Sea, in search of majestic emperor penguins, amidst immaculate and dreamlike landscapes.



INCLUDED CHARTERED FLIGHT -
Santiago, Chile - / Ushuaia, Argentina and return



Starting From RM RM10,210 per person
(Prestige Stateroom Deck 6)



Date {2027} 19 Nov - 02 Sept
Other dates [2027] : 07 - 20 Nov | 15 - 28 Dec



IN DETAIL

Length: 150 m • Width: 28 m • Draft: 10 m • Average cruising speed: 15 knots • Number of staterooms and suites: 123 • Crew members: 215 • Installed electrical power: 42 MW • Year of delivery: 2021



Le Commandant Charcot, the World's Only Luxury Icebreaker that reaches the most remote region on our planet



Ponant, the only cruise line to sail under French flag, with world's most comprehensive safety standards

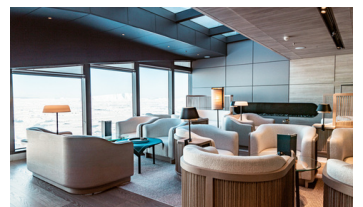


Exceptional unique destinations & programs



Exclusive Partnership with Smithsonian journeys & Explorers Club

EXCEPTIONAL SERVICES



Inspired, refined and varied cuisine, prepared by Michelin Starred chefs. Proud to feature the first ALAIN DUCASSE restaurant at sea.



All meals & beverages onboard, Captain's welcome cocktails, gala dinner, and open bars. Unlimited alcoholic drinks, and a selection of fine wines



FREE 24 hours room service & FREE WIFI



Modern & Elegant French-designed interiors & ambiance. Luxury amenities, Superior comfort & personalised service.



All cabins are suites with private balconies.



Smaller crowd, more privacy with max 246 guests on board



Pamper yourself on board Spa , Sauna & Snow rooms



FREE high quality POLAR PARKA & rental boots and port charges included

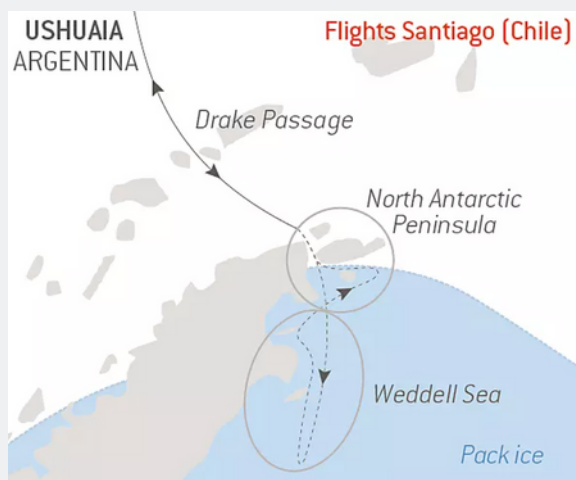
THE EMPEROR PENGUINS OF WEDDELL SEA (2027)

14 Days 13 Nights [Excluding flying time & Extra Post Night] | Santiago - Ushuaia - Santiago

Option Add on - extra 1 pre & post night in Santiago (recommended)



TENTATIVE ITINERARY



DAY 1 SANTIAGO (D)

Airport pick up transfer to hotel included. Meet and greet by our local representative. Dinner is included. Overnight in Hotel provided by PONANT.

DAY 2 USHUAIA (B/D)

Embarkation from 4:00 pm to 5:00 pm | Flight 3 hours
USHUAIA - Capital of Argentina's **Tierra del Fuego** province, Ushuaia is considered the gateway to the White Continent and the South Pole. Nicknamed "**El fin del mundo**" by the Argentinian people, this city at the end of the world.

DAY 3 - 4 CROSSING THE DRAKE PASSAGE (B/L/D)

Use your days spent in the **Drake Passage** to familiarise yourself with your ship and deepen your knowledge of the Antarctic.

DAY 5 NORTH ANTARCTIC PENINSULA (B/L/D)

Throughout your time in the **north of the Antarctic Peninsula**, you will find yourself in the heart of a spectacular decor in subtle shades of blue and white, surrounded by exceptional wildlife. You will sail through the Antarctic Sound, the gateway to the Weddell Sea, this sound is filled with gigantic tabular icebergs and plates of sea ice drifting northward from the coastal areas of this vast sea. It is home to Adelie penguins and a great many leopard seals.

DAY 6 - 11 THE WEDDELL SEA EXPLORATION (B/L/D)

Impassable, extreme and captivating: this is the best way to describe the Weddell Sea, much of which is covered by a layer of thick, densely packed ice. It is a challenge and a privilege to sail upon this sea. Polar exploration finds its full meaning here. Heading towards the South is a real quest, with the promise of highly-charged encounters with the continent's endemic fauna.

This is the **kingdom of the emperor penguin, the largest penguin** in the world, renowned for its elegance. Unlike other penguins that live on the rocks, the emperor nests on the ice floe which it needs for its reproductive cycle. In this southern sea, where the ice changes and is transformed constantly, there is never any monotony. You will sail into the heart of the immaculate ice floe, which is dislocated or densely packed, into an alley of icebergs.

Aboard, on shore, on the ice, you will be as close as possible to the colonies of Adelie penguins, Weddell seals, Mink whales, orcas, snow petrels. With a little luck, you will get a glimpse of a rare Ross seal with its silver pelage or of emperor penguins, waddling along the edge of the ice floe. A sight that is as fascinating as it is emotional.

DAY 12 - 13 CROSSING THE DRAKE PASSAGE (B/L/D)

Meal on board cruise ship

DAY 14 USHUAIA - SANTIAGO

Early morning Disembarkation at 8:00 am | Flight 3 hours
Cruise arrive in Ushuaia. Relax and have a last stroll at Ushuaia, also best know as the "Southern Tip of the world" the before boarding the intra-flight to Santiago (recommended add an extra night in Santiago before heading home. **(B & Light meal served on plane)**)

LE COMMANDANT CHARCOT

6 EXCEPTIONALLY ELEGANT SUITES & STATEROOMS

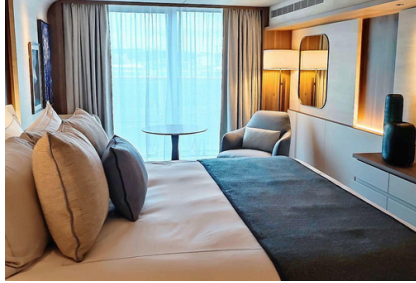
Decorated by French Interior designers, all with sea view



Prestige Stateroom

268 SQFT | MAX 2 GUESTS

- One king-size bed or two single beds
- A bathroom with shower
- Dyptique Paris top-of-the-line bath products
- A private 43 sqft balcony
- Includes Panoramic sliding glazed door
- Inclusive Internet access Wifi
- Individually-controlled air conditioning
- Minibar included
- Nespresso coffee maker and boiler
- 24hr room service
- Flat screen TV, international channels (availability dependent on navigation) and videos on demand



Deluxe Suite

354 SQFT | MAX 2 GUESTS

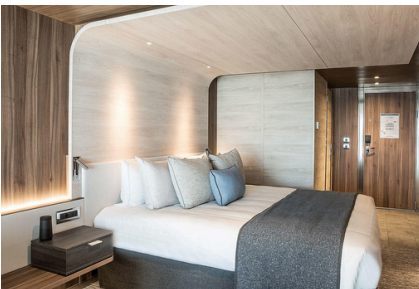
- A lounge area with chaise longue
- One king-size bed or two single beds
- A bathroom with shower
- Dyptique Paris top-of-the-line bath products
- A private 64.5 sqft balcony
- Includes Panoramic sliding glazed door
- Inclusive Internet access Wifi
- Individually-controlled air conditioning
- Minibar included
- Nespresso coffee maker and boiler
- 24hr room service
- Flat screen TV, international channels (availability dependent on navigation) and videos on demand



Prestige Suite

537 SQFT | MAX 2 GUESTS

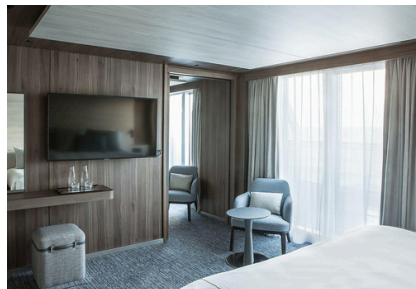
- A lounge with sofa & sliding courtesy door
- One king-size bed or two single beds
- Two bathrooms with shower
- Dyptique Paris top-of-the-line bath products
- Two Panoramic sliding glazed door
- A 107 sqft glazed private balcony
- Individually-controlled air-conditioning
- Minibar, Flat screen, Satellite TV
- Nespresso coffee maker and boiler
- Satellite direct line telephone,
- 24hr room service
- Unlimited WIFI Internet access
- Flat screen TV, international channels (availability dependent on navigation) and videos on demand



Grand Prestige Suite

531 SQFT | MAX 2 GUESTS

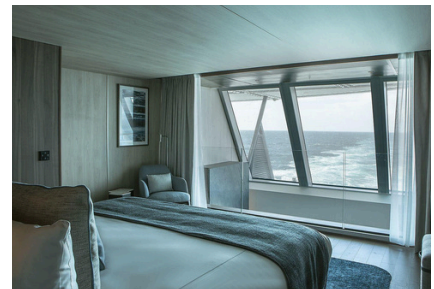
- Priority boarding
- Champagne and fruit basket upon arrival
- Butler service
- An assortment of sweet or savoury canapés and a basket of fruit every day
- A lounge with chaise longue
- A Samsung tablet connected to Wi-Fi
- A bedroom with king-size bed or two single beds
- A bathroom with shower & balneo bathtub
- A panoramic sliding bay window
- A 54 sqft glazed private balcony
- Individual-controlled air-conditioning
- Minibar,
- Nespresso coffee maker and boiler
- Satellite direct line telephone,
- 24hr room service
- Unlimited WIFI Internet access
- Two pairs of Swarovski CL Companion 10 x 30 binoculars



Privilege Suite

650 SQFT | MAX 4 GUESTS

- Priority boarding
- Champagne and fruit basket upon arrival
- Butler service
- An assortment of sweet or savoury canapés and a basket of fruit every day
- A lounge with chaise longue
- A Samsung tablet connected to Wi-Fi
- A bedroom with king-size bed or two single beds
- A bathroom with shower & balneo bathtub
- A panoramic sliding bay window
- A 134 sqft glazed private balcony
- Individual-controlled air-conditioning
- Minibar,
- Nespresso coffee maker and boiler
- Satellite direct line telephone,
- 24hr room service
- Unlimited WIFI Internet access
- Two pairs of Swarovski CL Companion 10 x 30 binoculars



Duplex Suite

1290 SQFT | MAX 4 GUESTS

- Private return transfer & Priority boarding
- Champagne and fruit basket upon arrival
- Butler service
- An assortment of sweet or savoury canapés and a basket of fruit every day
- A lounge with armchairs, sofa bed, steam fireplace and TV
- Dining room with a 6-seater table
- A minibar with RIEDEL crystal glasses
- A Samsung tablet connected to Wi-Fi
- A bedroom with king-size bed or two single beds
- A bathroom with shower & balneo bathtub
- Five panoramic windows and a glazed panoramic door
- A private 279 sqft terrace: outdoor lounge with sofa and armchairs, jacuzzi
- Two pairs of Swarovski CL Companion 10 x 30 binoculars